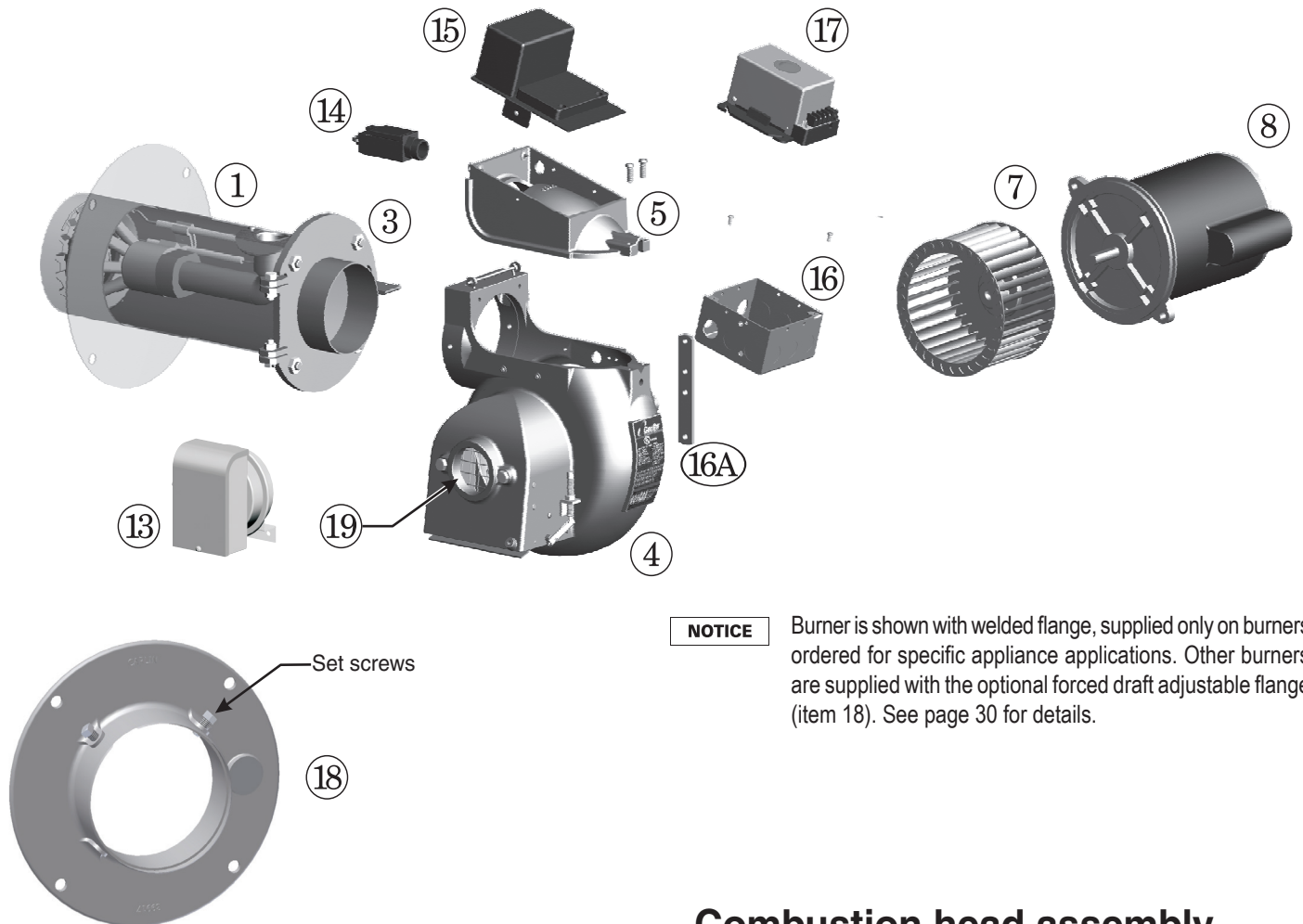


8. Replacement parts – Burner

Item number	Description	Part number
1	Air tube with gasket and flanged door assembly; welded appliance flange shown (specify appliance application and overall length of air tube) — Air tubes will be type B , C or D Combustion heads will be type 11 , 21 , or 31 (1" gas train connection) or type 12 , 22 , or 32 (1¼" gas train connection)	Consult factory
2	Gas manifold (specify overall length of air tube and input range required)	Consult factory
2a	Gas manifold gasket 1" 1¼"	99260 99430
3	Flanged door nuts (four required)	28357
4	Blower housing (with cover and pressure augments)	NA
5	Blower cover	NA
7	Blower wheel 6 ¼" diameter x 4" deep	98857
8	Motor Carlin PSC, 1/2 hp, 3450 RPM Marathon, 1/2 hp, 3450 RPM	Consult factory 27706S
9	Combustion head For 11, 12, 21 and 22 assemblies For 31 and 32 assemblies	99147 99427
9a	Static disc — Built into " 1x " and " 2x " heads (non-removable); not used in " 3x " heads	NA
9b	Diffuser plate (1x heads only)	99162
	Combustion head assemblies (includes items shown on next page) " 11 " combustion head assembly " 12 " combustion head assembly " 21 " combustion head assembly " 22 " combustion head assembly " 31 " combustion head assembly " 32 " combustion head assembly	99294 99535 99295 99536 99532 99516
9c	Retainer bolt (1x and 2x heads only, included with head)	NA
10	Electrode/flame rod bracket assembly Large Small	99153 99155
11a 11b	Ignitor electrodes Left Right	99292 99293
12	Flame rod	99161
13	Airflow switch assembly (sensing lines not shown, but included with kit) Airflow switch High pressure sense line Low pressure sense line	98521 99471 99472
14	Door interlock switch and mounting screws	99261KIT
15	Ignitor, Carlin electronic Model 41000 with cover plate	41000S0LC
16	Burner junction box, 4" x 4", with grommet, lock washer, conduit nipples (to burner housing)	99198C
16a	J-box mounting bracket	51124
17	Primary control, Carlin 60200FR microprocessor flame rod control	60200FR343S
18	Optional adjustable forced draft flange	99255
19	Air inlet screen	99438

Where appliance instructions differ from this manual, follow the appliance instructions.

8. Replacement parts – Burner (continued)



Combustion head assembly

