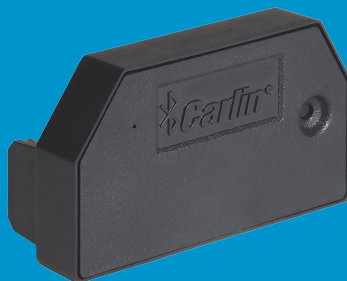


Carlin[®] Connect

Bluetooth[®] MODULE

Compatible with Carlin ProX 70200 Primary Controls with date code 09/30/2017 or after



QUICK START GUIDE

BEFORE USING THE APP

To ensure proper operation, please follow steps A - D found in this manual. Failure to do so will result in no connection and inaccurate readings from your Bluetooth[®] Module.

NOTE: Only Gen-2 70200 controls (mfg after 09/29/2017) can be updated for use with the Carlin Connect module/ app.

LED INDICATOR



- Blinking = Normal Operation
- Slow Blink = Module is Performing a 70200 update. Do not remove module.
- Solid/ No Blink = Module has lost communication. Unplug the module then plug back into your 70200
- Rapid Blink - For Future Use (Module Update)



Carlin
Connect
App Icon

A DOWNLOAD THE CARLIN CONNECT APP

- 1 Download the Carlin Connect mobile app to your iPhone or Android device.

B PLUG IN THE BLUETOOTH[®] MODULE

- 1 Turn off power to the heating system.
- 2 Remove the label covering the connection plug on the right-hand side of the 70200 Primary Control
- 3 Remove the backing tape from Velcro strip on the back of the module so it will adhere to the 70200 when installed.
(Note: This step is not required if the module is used temporarily and will be removed following the service call.)
- 4 Plug in the Bluetooth[®] Module – pressing firmly to ensure the adhesive attaches.

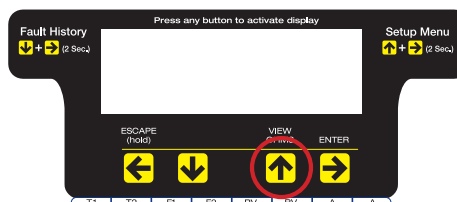


C UPDATE SOFTWARE ON 70200

IF USING A CONTROL WITH A DATE CODE OF 09/14/25 or later, SKIP THIS STEP AND PROCEED TO STEP D

NOTE: The Following steps will update the software on the 70200. It will only need to be performed when installing the module for the first time on any control. Existing Fault History and Total Control History will not be affected.

- 1 Turn off power to the 70200 control
- 2 Press and hold the button on the 70200.



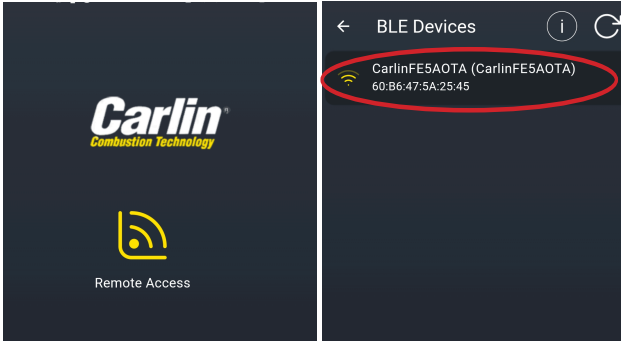
- 3 Turn power on while holding the button for 2 seconds, then release. The LCD screen on the 70200 will go dark and the light on the Module will blink at its slow rate.
- 4 Wait 60 seconds - The 70200 will turn on and show the software version (V.2.05 or higher) on the screen. The light on the module will blink at its standard rate.
- 5 Respond to the 70200: With the software now updated, the 70200 will prompt "Does Burner Have Solenoid Valve?" Press for Yes or for NO

D

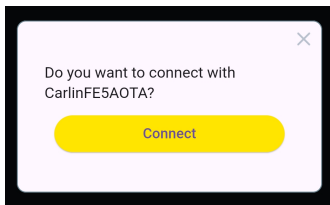
PAIR THE BLUETOOTH® MODULE TO YOUR PHONE

NOTE: The module will only need to be paired to your phone once. The Carlin Connect app will recognize the module on future service calls when it is in close proximity to it.

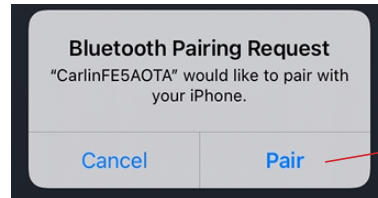
- 1 Open the Carlin Connect App on your phone.
- 2 From the Main Screen, open the "Remote Access" menu. Select your module from the list (may take 5 seconds to load)



- 3 Click on your module and select "connect", then press the "pair" button on your Bluetooth® Module once.



- 4 A window will appear on your phone prompting you to pair (example below). Select "pair" and you will then be brought to the main control dashboard. (Select your module again if you're not automatically brought to the main control dashboard).



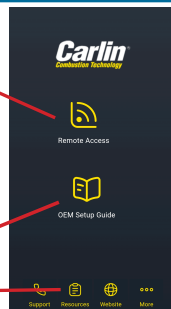
UN-PAIRING/ FORGETTING PAIR:

If you un-pair/ forget the Bluetooth® module from your phone's list of Bluetooth® devices, you will also have to remove the pair from the Bluetooth® Module itself to re-pair in the future. To do this, follow steps 1-2, pressing the "pair" button twice in succession at step 2 (instead of once). This will delete the pair on your Bluetooth® Module.

NAVIGATION & FEATURES

Remote Access:

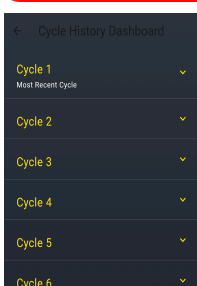
- Live Control Readings
- "Last Fault" troubleshooting guide
- Remote Programming Dashboard
- Detailed Cycle History Logs
- Fault History Logs
- Total Control History



Resources:

- OEM Setup Guide – Direct link to our Burner Setup Tables
- Resources – Links to our website that includes manuals, wiring info, specs and more
- Support – One touch dial to our technical support line
- More – Access to training videos, biofuel info, cross-reference guides, and more

CYCLE HISTORY FUNCTIONALITY



The Carlin Connect Bluetooth® Module will begin to collect cycle data once it is plugged into your 70200 Primary Control. If the Bluetooth Module is moved from one 70200 (control A) to another (control B), the cycle logs from control A will be deleted and the module will begin to collect cycle logs from control B.

Note: Fault History and Total Control History Stored on the 70200 will not be affected