



Gas Train and Wiring Supplement

For
**301GAS,
601GAS,
301GAS (Mass Code),
601GAS (Mass Code),
Ventless Train**

Use with Instruction Manuals
MN301GAS and MN601GAS

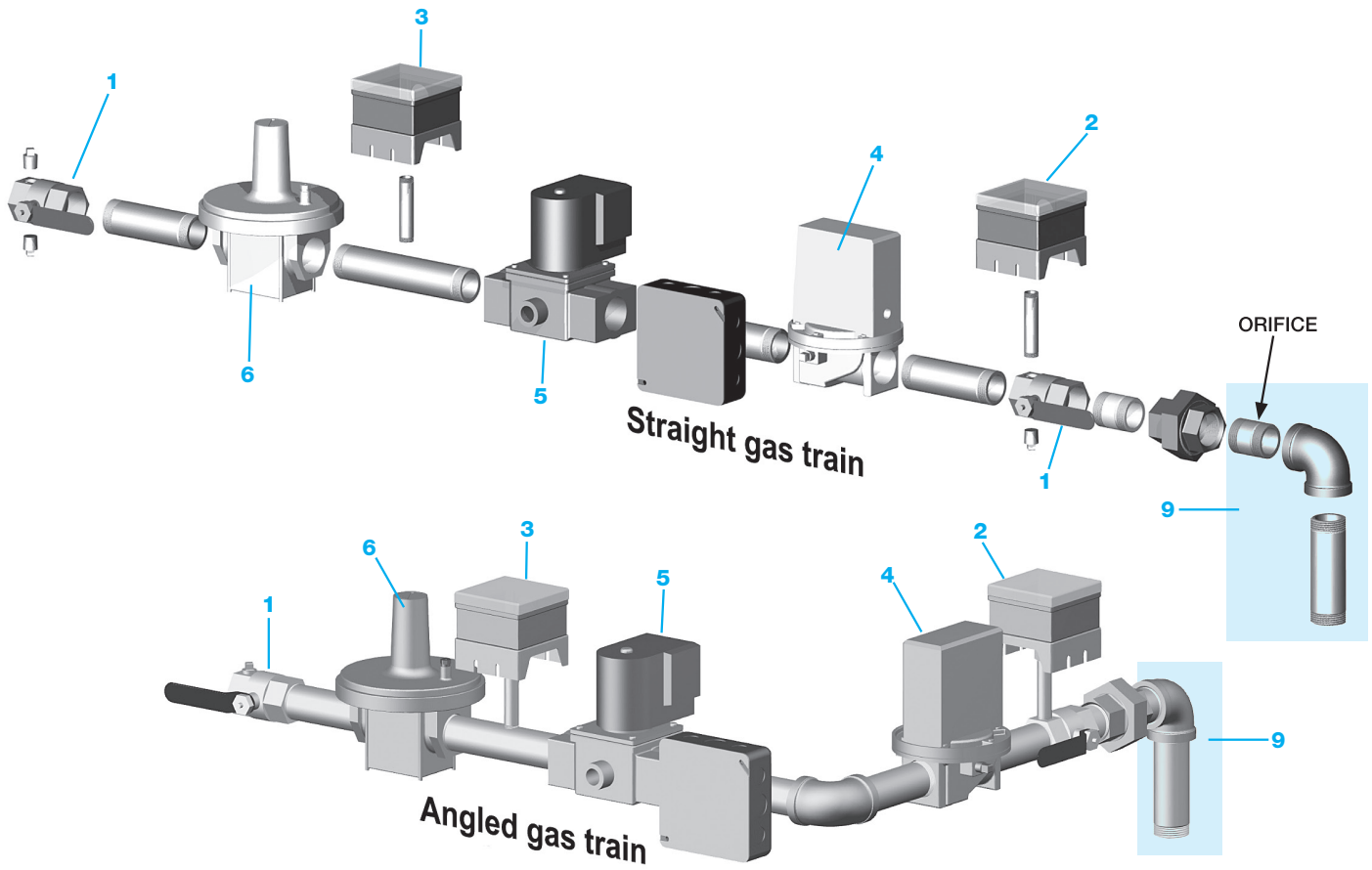
Carlin Combustion Technology, Inc.

126 Bailey Rd
Ph 203-680-9401

North Haven, CT 06473
Fx 203-680-9403

301 / 601 Gas Train

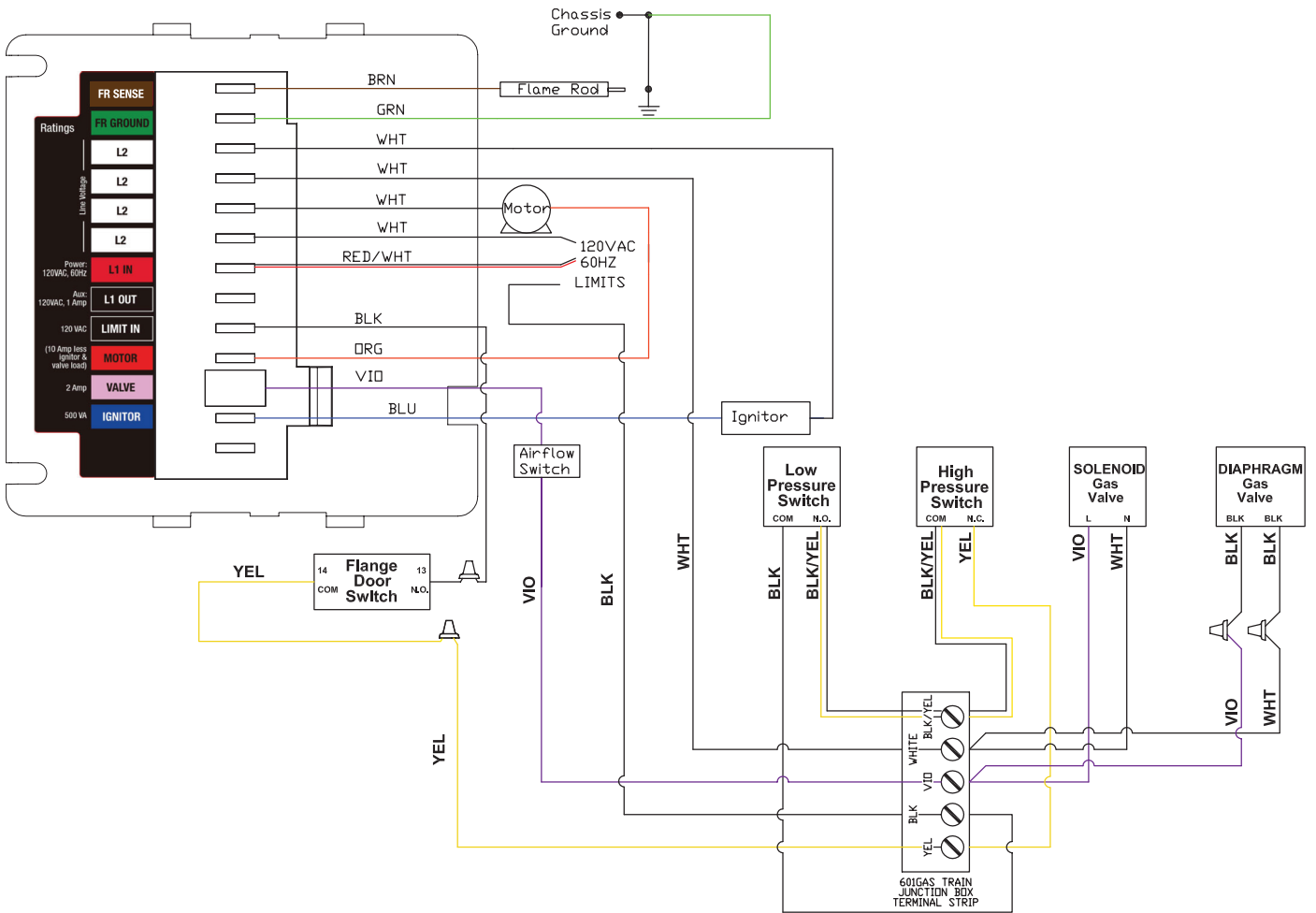
Note: Parts may not be exactly as shown in diagram.



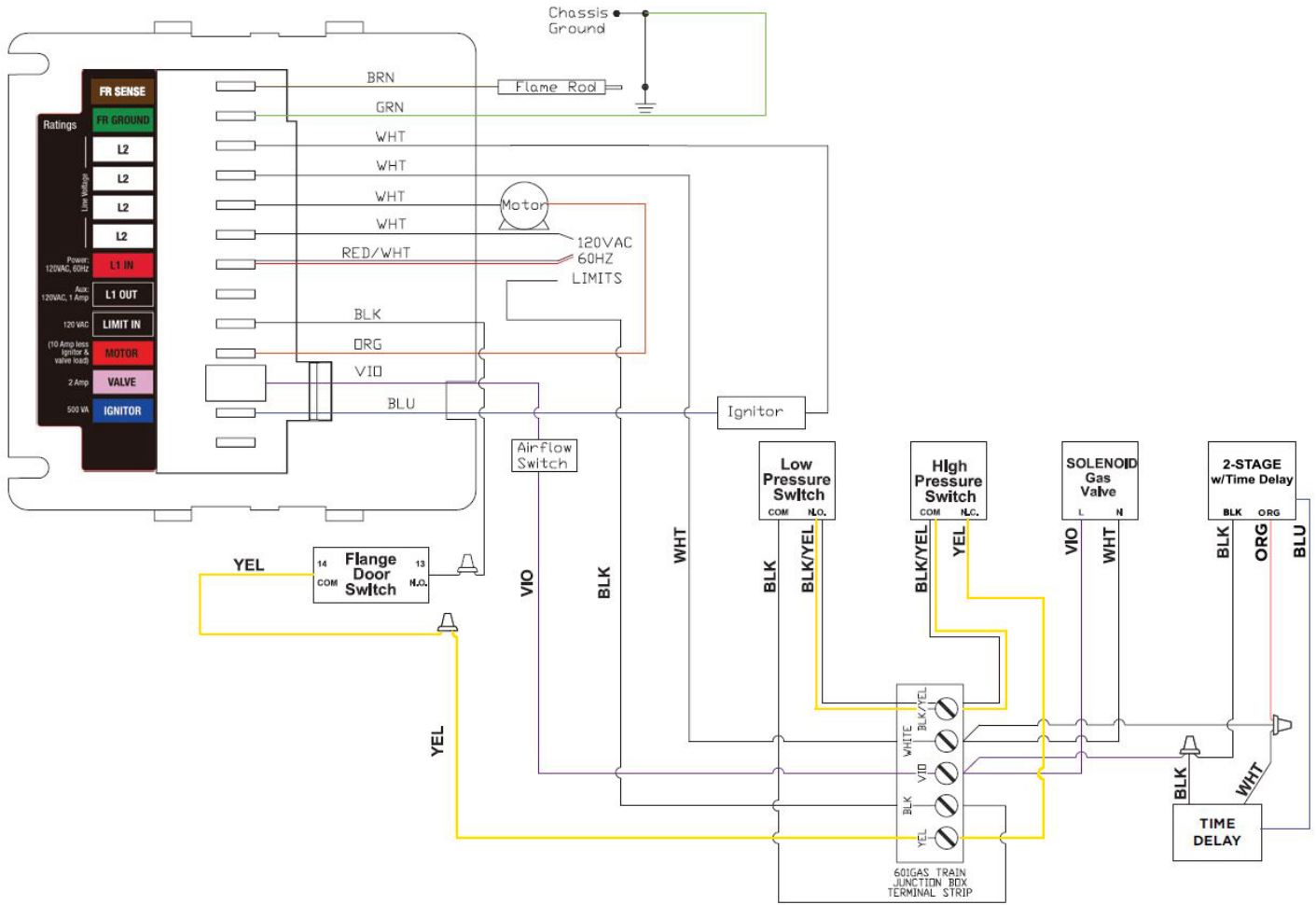
301 / 601 Gas Train Parts List

ITEM	PART NO.	DESCRIPTION	301GAS	601GAS	
1	99225S	Manual Gas Shutoff 1" NPT	•	•	
	99245S	Manual Gas Shutoff 1-1/4" NPT	•	•	
	99246S	Manual Gas Shutoff 1-1/2" NPT	•	•	
	99926S	Manual Gas Shutoff 2" NPT	•	•	
2	99235S	High gas pressure switch	•	•	
3	99234S	Low Gas pressure switch	•	•	
4	99227S	Primary Gas Valve, Honeywell 48A 2169 1" NPT w/ bleed restrictor	•	•	
	99434S	Primary Gas Valve, Honeywell 48A 2177 1-1/4" NPT w/ bleed restrictor	•	•	
	99434AS	Primary Gas Valve, Honeywell V48A 2185 1-1/2" NPT w/ bleed restrictor	•	•	
	99434BS	Primary Gas Valve, Honeywell 48A 2243 2" NPT w/ bleed restrictor		•	
	99796AS	Primary Gas Valve Honeywell V4944N-1011 1" NPT MASS CODE Natural Gas		•	
	99796BS	Primary Gas Valve Honeywell V4944N-1029 1-1/4" NPT MASS CODE Natural Gas		•	
	99796ES	Primary Gas Valve Honeywell V4944N-1037 1-1/2" NPT MASS CODE Natural Gas		•	
	99796FS	Primary Gas Valve Honeywell V4944N-1045 2" NPT MASS CODE Natural Gas		•	
	99796CS	Primary Gas Valve Honeywell V4944L-1016 1" NPT MASS CODE Propane Gas		•	
	99796DS	Primary Gas Valve Honeywell V4944L-1024 1-1/4" NPT MASS CODE Propane Gas		•	
	5	99229S	Secondary Gas Valve Honeywell V4295A 1031 – 1" NPT	•	•
		99435S	Secondary Gas Valve Honeywell V4295A 1049 – 1-1/4" NPT	•	•
		99435AS	Secondary Gas Valve Honeywell V4295A 1056 – 1-1/2" NPT	•	•
99435BS		Secondary Gas Valve Honeywell V4295A 1064 – 2" NPT	•	•	
6	99233S	Gas Pressure Regulator 1" NPT Maxitrol RV-61	•	•	
	99432S	Gas Pressure Regulator 1-1/4" NPT Maxitrol RV-81	•	•	
	99432AS	Gas Pressure Regulator 1-1/2" NPT Maxitrol RV-81	•	•	
	99432BS	Gas Pressure Regulator 2" NPT Maxitrol RV-91	•	•	
7	99957S	Time Delay relay 8-second (Mounted to gas train junction box)	•	•	
8	99415S	Spring Kit (Includes 99759 & 99415)	•	•	
9	9925020XX	Gas Orifice pilot hole for field drill 7/32" - 1" NPT	•	•	
	9947620XX	Gas Orifice pilot hole for field drill 9/32" - 1-1/4" NPT		•	
	99250Kit1S	Orifice 7/32 & 3" Elbow kit	•		
	99476KIT1S	Orifice 9/32 & 3" Elbow Kit	•	•	

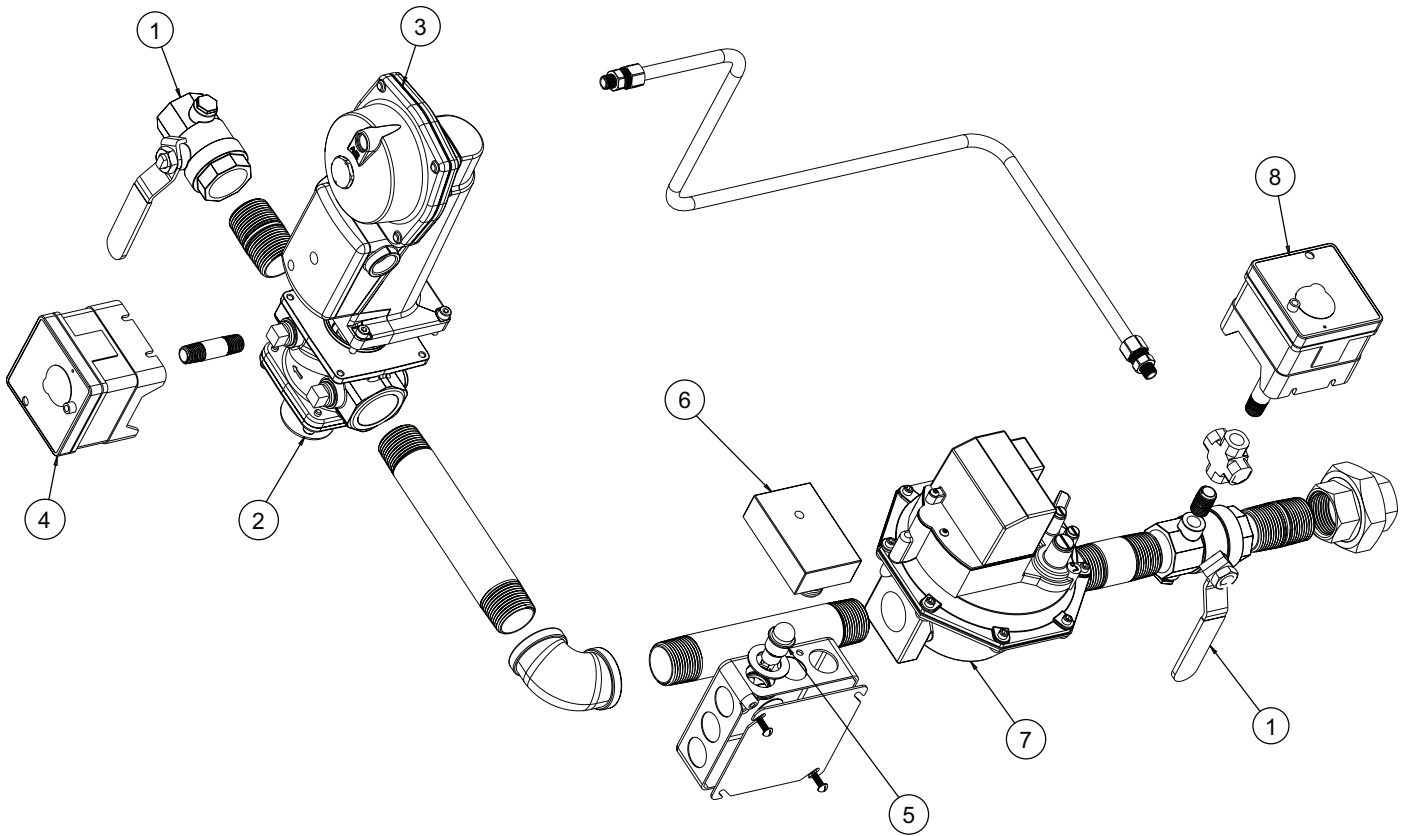
Wiring diagram — 301GAS and 601GAS burner with 60200FR primary control
Standard Commercial Gas Train 120V



Wiring diagram — 301GAS (Mass Code) and 601GAS (Mass Code) burner with 60200FR (non-recycling) primary control
Massachusetts Commercial Gas Train 120V



301 / 601 Ventless Gas Train



NOTE Outside vent line not required when using ventless gas train.

NOTE Ventless trains configured with Mass Code compliant components.

301 / 601 Ventless Gas Train Parts List

ITEM	PART NO.	DESCRIPTION
1	99225S	Manual Gas Shutoff 1" NPT
	99245S	Manual Gas Shutoff 1-1/2" NPT
	99246S	Manual Gas Shutoff 1-1/4" NPT
	99926S	Manual Gas Shutoff 2" NPT
2	51144AS	1" Gas Reg. Sngl Body (Siemens)
	51144CS	1-1/2" Gas Reg. Sngl Body (Siemens)
	51144DS	2" Gas Reg. Sngl Body (Siemens)
3	51143S	Gas Reg / SSOV (Siemens)
4	99234S	Low Pressure Switch
5	74823	Indicator Lamp Asembly; Indicator Lamp
6	99957	8 Sec Time Delay
7	99796AS	Primary Gas Valve Honeywell V4944N-1011 1" NPT MASS CODE Natural Gas
	99796ES	Primary Gas Valve Honeywell V4944N-1011 1-1/2" NPT MASS CODE Natural Gas
	99796FS	Primary Gas Valve Honeywell V4944N-1011 2" NPT MASS CODE Natural Gas
	99796CS	Primary Gas Valve Honeywell V4944N-1011 1" NPT MASS CODE Propane Gas
8	99235S	High Gas Pressure Switch

Wiring diagram — 301GAS and 601GAS Burner with Ventless Commercial Gas Train
Ventless Commercial Gas Train 120V

