

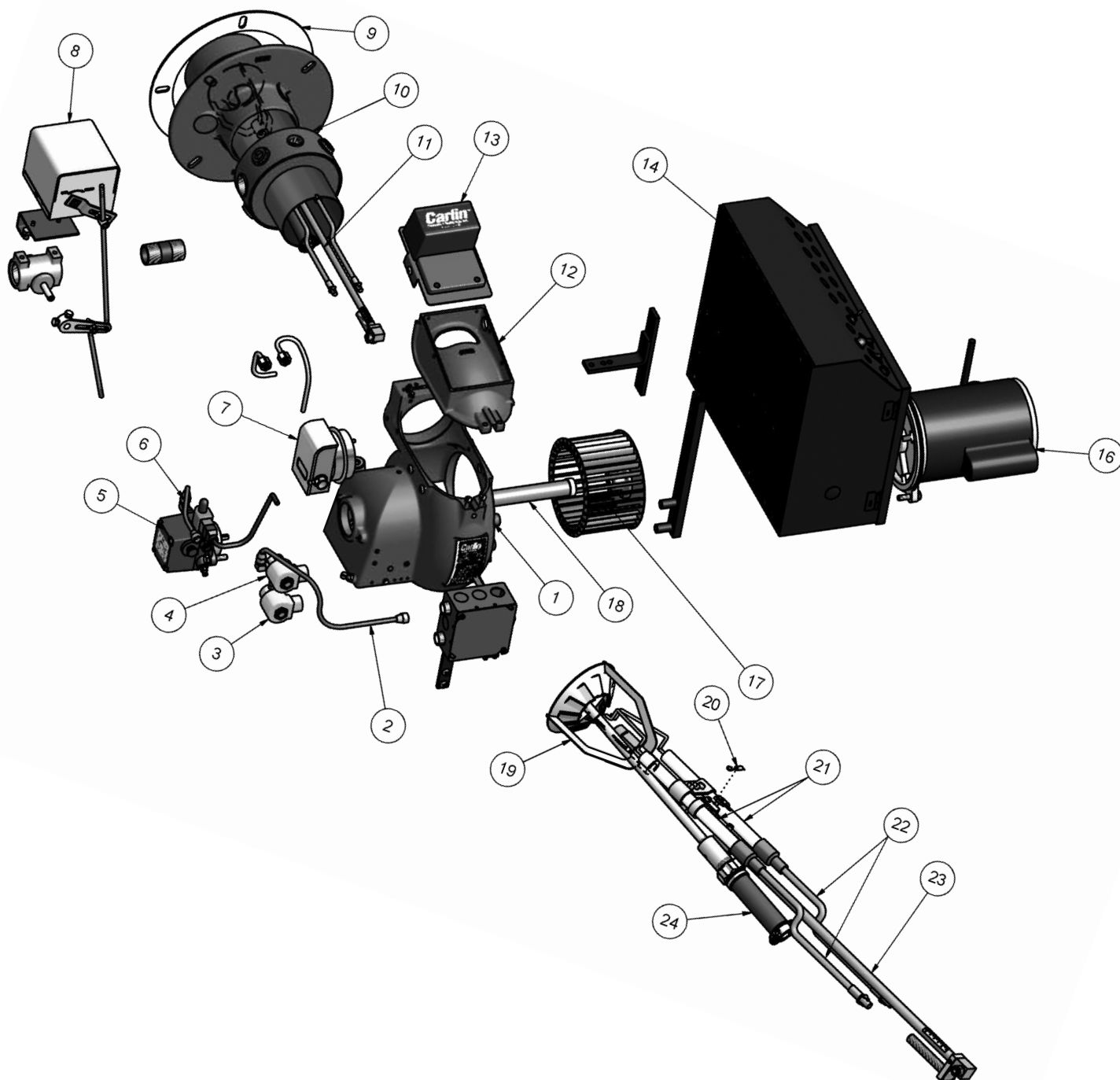
10. Repair parts — Burner housing and components

Item	Description	Part No.
1	Blower housing with cover and pressure augmentor	NA
2	Fuel line	75291
3	Safety shut-off oil valve (2-way)	40857
4	Safety shut-off oil valve (3-way)	41004
5	Fuel unit with blocking valve (energized for high fire)	23556S
6	Fuel line	75291
7	Airflow switch	98522
8	Siemens SQN71 Damper Actuator	51317
9	Gasket	40246
10	14" airtube with pressurized flange; 1" main gas inlet; 1/2" pilot inlet	99541
11	14" combustion head assembly (includes thermal fuse and electrode wire)	57810
12	Blower cover	NA
13	Electronic ignitor on baseplate	41000S0LC
14	Electrical Panel Box Including:	
	Honeywell RM7897C	99766
	Subbase for RM7897C	97656
	Amplifier for RM7897C	97662
	Timing card for RM7897C	97655
16	Motor	27706
17	Blower wheel	98857KIT
18	Pump coupling	98856
19	Retention ring assembly	56747S
20	Thermal fuse	34215
21	Ignition electrodes -- Left & Right	98507
22	Ignition wire (One wire in service pack)	55772S
23	14" nozzle line with nozzle adapter	59030S
24	Honeywell C7027A UV scanner	35311

Where appliance instructions differ from this manual, follow the appliance instructions.

For parts not shown or listed, contact factory and/or check separate documentation supplied with appliance/burner unit.

10. Repair parts (continued)



10. Repair parts — gas train components

Item	Description		Part No.
1	Orifice nipple assembly	Natural gas (.328) Propane (.266)	73007 73007A
2	Black iron elbow, 1/2" NPT		Obtain locally
3	Black iron nipple, 1/2" NPT x 2"		Obtain locally
4	Black iron nipple, 1/2" NPT x close		Obtain locally
5	Ground joint union, iron, 1/2" NPT		Obtain locally
6	Black iron nipple, 1/2" NPT x 6"		Obtain locally
7	Black iron reducing coupling, 3/4" x 1/2" NPT		Obtain locally
8	Black iron nipple 3/4" NPT x close		Obtain locally
9	Pilot gas valve, Honeywell VR4305M-4540, 3/4" NPT		98523
10	Pipe assembly, straight train, 3/4" NPT both ends	Steel tubing 3/4" x 21" Adapters, 3/4" NPT x compression	99692 99691
11	Black iron elbow, 3/4" NPT		Obtain locally
12	Ball valve, Novasfer 840/S, 3/4" NPT		99455
13	Black iron nipple, 1" NPT x 3"		Obtain locally
14	Butterfly valve, Eclipse 4BV-A, 1" NPT Valve crank arm, Eclipse 4BV-A MOD	Valve Crank arm	99533 99534MOD
15	Black iron tee, reducing, 1" x 3/4" x 1" NPT		Obtain locally
16	Ground joint union, iron, 1" NPT		Obtain locally
17	Ball valve, Novasfer 840/S	1" NPT 1 1/4" NPT 1 1/2" NPT 2" NPT	99225 99245 99246 99926
18	Black iron nipple, 1" NPT x 2"		Obtain locally
19	Gas valve	Honeywell V48A-2169, 1" NPT Honeywell V48A-2177, 1 1/4" NPT Honeywell V48A-2185, 1 1/2" NPT Honeywell V48A-2243, 2" NPT	99227 99434 99434A 99434B
20	Gas valve	Honeywell V4295A-1031, 1" NPT Honeywell V4295A-1049, 1 1/4" NPT Honeywell V4295A-1056, 1 1/2" NPT Honeywell V4295A-1064, 2" NPT	99229 99435 99435A 99435B
21	Gas train junction box/nipple assembly		99517
22	Pipe assembly, angled train, 3/4" NPT both ends	Steel tubing, 3/4" x 90° bend Adapters, 3/4" NPT x compression	99692A 99691
23	Gas pressure regulator, Maxitrol Regulator spring (blue standard, violet optional)	RV61, 1" NPT RV81, 1 1/4" NPT RV81, 1 1/2" NPT RV91, 2" NPT Blue, #R6110-512, 5.0 – 12.0 IWC Violet, #R8110-412, 4.0 – 12.0 IWC	99233 99432 99432A 99432B 99759 99415
24	Black iron elbow, 1" NPT		Obtain locally

NOTICE: Pipe fitting sizes above are based on standard 1" gas trains. Pipe fittings will be different on optional 1 1/4", 1 1/2" or 2" gas trains.

Where appliance instructions differ from this manual, follow the appliance instructions.

For parts not shown or listed, contact factory and/or check separate documentation supplied with appliance/burner unit.

10. Repair parts (continued)

